



- Predictive Maintenance.
- Advanced Remote Diagnosis.
- Fleet safety increase.
- Decision-Making based on data.
- Carbon footprint reduction.
- Cost control and optimisation of resources.
- Maximisation of fleet availability.



Cojali S.L.  
Avenida de la Industria, 3  
13610 Campo de Criptana, Spain  
Tel.: +34 926 278 181  
jaltest-telematics@jaltest.com

jaltest.com  
jaltest-telematics.com

2021 V.2 EN



**JALTEST TELEMATICS,  
CONNECTED TO  
THE VEHICLE HEART**

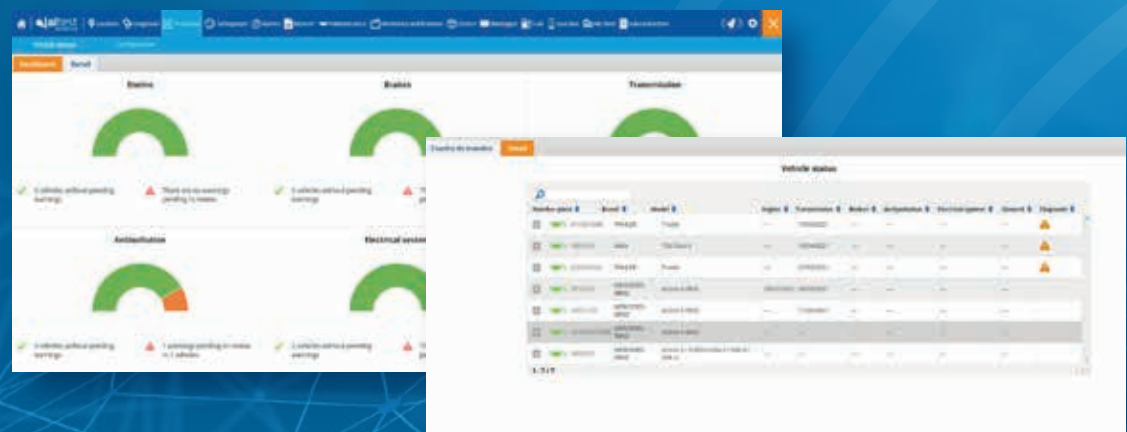


# PREDICTIVE MAINTENANCE AND DIAGNOSTICS

## PREDICTIVE MAINTENANCE

Thanks to the machine learning models developed by Cojali, Jaltest Telematics is able to estimate the useful life time of a system or a component, based on the information recorded from the vehicle, its history, the conditions of use, and the maintenance operation history. This makes possible to establish the slots for each maintenance action and prevents potential failures.

- ✓ Optimisation of maintenance operations, making the most of the useful life of the components.
- ✓ Prevention of potential failures, reducing unexpected events and breakdown assistance, and enhancing safety.
- ✓ Optimisation of resources, minimising periods of inactivity and reducing the carbon footprint.



## REMOTE DIAGNOSTICS

- Present errors.
- Reading of out-of-range indicators.
- Real-time notifications.
- Next maintenances.
- Fleet health check.
- Error clearance. e.g. anti-pollution system.
- Remote regeneration of the particulate filter.

# FLEET MANAGEMENT

## LOCATION

- Current position.
- History.
- Nearest vehicle.
- My locations.

## TACHOGRAPH

- Remote download of tachograph.
- Remote download of driver cards, driving times and rest times.

## ALARMS

- Location.
- Distance travelled.
- Time intervals.
- Overspeeding.
- Maintenance.
- Diagnosis.
- Pending tachograph/driver card downloads.

## WORKSHOP NOTIFICATIONS

- Repair management.
- Maintenance management.
- Possibility of remote diagnostic.
- Possibility to have a workshop network.

## MESSAGES

- Communication service.
- Custom sending of planned reports.

## ORDER MANAGEMENT

- Good tracking.
- Real-time tracking.
- Chat with the driver.
- History of changes.

## SENSING

- Doors opening and closing.
- Cold chain management.
- Temperature and pressure control of tyres.
- Driver identification in vehicle by magnetic key.

## MAINTENANCE

- Management of maintenance tasks.
- Maintenance log.
- Maintenance management through workshop notifications.

## FUEL

- Refuelling recording for drivers and information about actual fuel costs.

## REPORTS

- Diagram and chart of trips.
- Efficient driving reports.
- Drivers' Ranking.
- Parameter and data reading of the trailer.

## GEO BOX

- Container location without GPS through mobile app.

## SUBCONTRACTOR

- Integrated ERP module to collect company data and freelances subcontracted by the company.